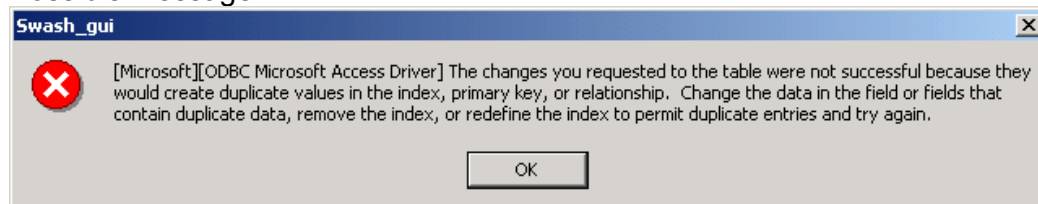


## FOCUS\_SWASH potential errors

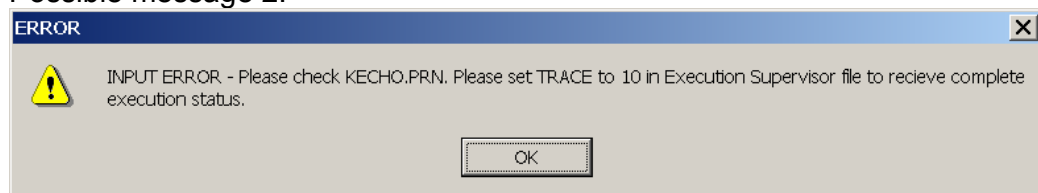
(05/May/2004)

Some users have contacted us with one of the two error messages shown below. These messages came up after introducing a considerable number of substances or projects into the SWASH database, deleting some of these and next, re-creating some.

### Possible message 1:



### Possible message 2:



### followed by:

\*\*\*\*\*

PRZM3 v 3.21á FOCUS Release, Feb., 2001

DEVELOPED FOR:

R. F. Carsel  
U.S. Environmental Protection Agency  
Office of Research and Development  
National Environmental Research Laboratory

\*\*\*\*\*

Selected options:

Number of PRZM zones.....1  
Number of EXAMS environments.....0  
Number of VADOFT zones.....1  
Monte Carlo.....OFF  
PRZM.....ON  
VADOFT.....OFF  
Transport simulation.....ON

Files:

```
METEOROLOGY FILE for ZONE [ 1] uses UNIT [32]...C:\SWASH\PRZM\MET\R1NOIRR.MET
*****
*
* F A T A L   E R R O R [ 105]
*
* Error in attempting to open file [C:\SWASHPROJECTS\LUF_VINES_JUNE\PRZM\VINE*_]
*
*
*
*****
```

This problem may be solved by

(i) re-installing SWASH, including its database (you then lose the data in the current database) or

(ii) repairing the SWASH database. This can be done by making use of the options Compact and Repair in MS Access. To do so:

1. Contact the [focus.helpdesk@jrc.it](mailto:focus.helpdesk@jrc.it) to obtain the password of the SWASH database
2. Open the SWASH database (C:\SWASH\Data\SWASH\_db.mdb) in MS Access **version 97**
3. Select menu option Tools – Database Utilities
4. Use the options Compact Database and Repair Database.
5. Close the SWASH database and restart using the SWASH User Interface

The background of this problem is that sometimes the database is not 'cleaned' properly by MS Access, when many records have been deleted and/or re-created. Recognizing this problem, the options Compact Database and Repair Database were added to the MS Access software package.

The SWASH database is secured by a password to prevent users from messing up the database, thus causing a possibly incorrect behaviour of the SWASH User Interface.